



TERMOELEMENT MED FLÄNSAT DYKRÖR TW40

Serie TC10-F

TC10F-14369122

Typ K -40-1200°C 250x12mm DN40 form 2F

- Mätelelement typ K, J, E, N eller T
- Mätområde från -40 till 1200°C
- Option: ATEX-klassning
- Utbytbar mätinsats
- Svetsat dykrör med fläns



PRODUKTBESKRIVNING

Serie TC10-F är anpassad för montering i kärl och rörledningar. Standardflänsar enligt DIN EN eller ASME finns som alternativ. Termoelementet är lämpad för temperaturmätning i vätska och gaser, dykröret är svetsat och skruvat in i sensorhuvudet. Rostfritt stål är lämpligt för normala kemiska förhållanden i mediet, men vid aggressivare förhållanden rekommenderas en beläggning.

Den utbytbara mätinsatsen kan tas bort utan att hela givaren behöver kopplas från processen, vilket gör att inspektion, övervakning och service blir enkelt. En bred variation av instickslängder, flänsstorlekar, dykrörs-designer och sensorhuvuden gör att varje termoelementet passar varje applikation.

Beställningsnyckel:

- Godkännanden?
- Antädningskydd?
- Fler godkännanden/cert?
- Termoelement typ?
- Antal element?
- Noggrannhet?
- Modell på huset?
- Kabelingång + storlek?
- Ev transmitter?
- Anslutning dykrör?
- Material dykrör?
- Dykrör storlek?
- Storlek fläns?
- Anslutning halsrör?
- Halsrör längd?
- Processanslutning?
- Instickslängd?

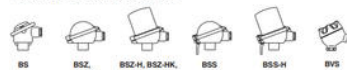
TEKNISK DATA

Anslutning	Form 2F, rakt instick
Elektrisk anslutning	M20x1,5
Innerdiameter	7 mm
Insticksdiameter	12 mm

Instickslängd	250 mm
IP-klass	IP65
Material Givarkropp	Inconel - 600
Material Hus	Aluminium
Material Mediaberörda delar	Rostfritt stål 316Ti
Mätsensor	Typ K
Mätspets	Ojordad
Mätssystem	Enkelledare
Nacklängd	0,065 m
Noggrannhet	Klass 2 enl. IEC 60584
Processanslutning	Fläns DN40 DIN 2526/2527
Temperaturområde från	-40 °C
Temperaturområde till	1200 °C
Temperaturlåghet hus från	-40 °C
Temperaturlåghet hus till	80 °C
Tryckåghet max	16 bar
Övrigt	BSZ hus

Connection head

■ European designs per EN 50446 / DIN 43735



Model	Material	Cable entry thread size	Ingress protection (max.) ¹⁾	Cup	Surface	Connection to pack tube
BS	Aluminium	M20 x 1.5 or 1/4 NPT ²⁾	IP65, IP66	Flat cap with 2 screws	Blue, lacquered ³⁾	M24 x 1.5, 1/4 NPT
BSZ	Aluminium	M20 x 1.5 or 1/4 NPT ²⁾	IP65, IP66	Spherical hinged cover with cylinder head screw	Blue, lacquered ³⁾	M24 x 1.5, 1/4 NPT
BSZ-H	Aluminium	M20 x 1.5 or 1/4 NPT ²⁾	IP65, IP66	Raised hinged cover with cylinder head screw	Blue, lacquered ³⁾	M24 x 1.5, 1/4 NPT
BSZ-H (2x cable outlet)	Aluminium	2 x M20 x 1.5 or 2 x 1/4 NPT ²⁾	IP65, IP66	Raised hinged cover with cylinder head screw	Blue, lacquered ³⁾	M24 x 1.5
BSZ-H / DN10 ⁴⁾	Aluminium	M20 x 1.5 or 1/4 NPT ²⁾	IP65	Raised hinged cover with cylinder head screw	Blue, lacquered ³⁾	M24 x 1.5, 1/4 NPT
BSS	Aluminium	M20 x 1.5 or 1/4 NPT ²⁾	IP65	Spherical hinged cover with clamping lever	Blue, lacquered ³⁾	M24 x 1.5, 1/4 NPT
BSS-H	Aluminium	M20 x 1.5 or 1/4 NPT ²⁾	IP65	Raised hinged cover with clamping lever	Blue, lacquered ³⁾	M24 x 1.5, 1/4 NPT
BVS	Stainless steel	M20 x 1.5 ²⁾	IP65	Pressure-tight screw-on lid	Blank, electropolished	M24 x 1.5
BSZ-K	Plastic	M20 x 1.5 or 1/4 NPT ²⁾	IP65	Spherical hinged cover with cylinder head screw	Black	M24 x 1.5
BSZ-HK	Plastic	M20 x 1.5 or 1/4 NPT ²⁾	IP65	Raised hinged cover with cylinder head screw	Black	M24 x 1.5

Model	Explosion protection			
	without	Ex I (gas) Zone 0, 1, 2	Ex I (dust) Zone 20, 21, 22	Ex II (gas) Zone 2
BS	x	x	-	-
BSZ	x	x	x	x
BSZ-H	x	x	x	x
BSZ-H (2x cable outlet)	x	x	x	x
BSZ-H / DN10 ⁴⁾	x	x	-	-
BSS	x	x	-	-
BSS-H	x	x	-	-
BVS	x	x	-	-
BSZ-K	x	x	-	-
BSZ-HK	x	x	-	-

Cable entry



The pictures show examples of connection heads.

Cable entry ¹⁾	Cable entry thread size
Standard cable entry ¹⁾	M20 x 1.5 or 1/4 NPT
Plastic cable gland (cable Ø ≤ 10 mm) ²⁾	M20 x 1.5 or 1/4 NPT
Nickel-plated brass cable gland (cable Ø 6 ... 12 mm)	M20 x 1.5 or 1/4 NPT
Stainless steel cable gland (cable Ø 7 ... 12 mm)	M20 x 1.5 or 1/4 NPT
Plain threaded	M20 x 1.5 or 1/4 NPT
2 x M20 x 1.5 ²⁾	2 x M20 x 1.5
Junction box M12 x 1 (4-pin) ³⁾	M24 x 1.5
Sealing plugs for transport	M20 x 1.5 or 1/4 NPT

Electrical connection



Protection tube designs in accordance with DIN 43772

Protection tube	Material	Protection tube Ø	Suitable for measuring insert Ø	Connection to head
Straight, form 3F DIN 43772 E1	Stainless steel 1.4571	9 x 1 mm	9 mm	M24 x 1.5 (rotatable threaded connection, male nut)
		11 x 2 mm	11 mm	
		12 x 2.5 mm	12 mm	
Tapered, form 3F DIN 43772 E1	Stainless steel 1.4571	14 x 2.5 mm	6 mm with sleeve Ø 8 mm / 8 mm	M24 x 1.5 (rotatable threaded connection, male nut)
		12 x 2.5 mm, tapered to 9 mm	6 mm	

Protection tube designs in line with DIN 43772, weld-on solid tip

Protection tube	Material	Protection tube Ø	Suitable for measuring insert Ø	Connection to head
Tapered, weld-on solid tip, in line with DIN 43772, non-standard design E1	Stainless steel 1.4571	9 x 1 mm, tapered to 6 mm / 11 x 2 mm, tapered to 6 mm / 12 x 2.5 mm, tapered to 6 mm	3 mm	M24 x 1.5 (rotatable threaded connection, male nut)

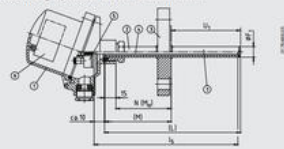
Protection tube designs in line with DIN 43772, wetted parts: special material, gilder flange: stainless steel

Protection tube	Material	Protection tube Ø	Suitable for measuring insert Ø	Connection to head	
Straight, in line with form 3F DIN 43772, non-standard design E1	2.4360 (RohrK05) / stainless steel / 2.4619 (InvarK07) / stainless steel / 2.4610 (InvarK04) / stainless steel / 3.7029 (Titan Grade 2) / stainless steel	13.7 x 2.2 mm	6 mm with sleeve Ø 8 mm / 8 mm	M24 x 1.5 (rotatable threaded connection, male nut)	

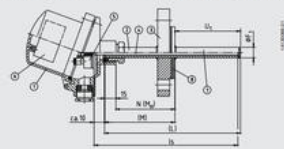
Protection tube designs in line with DIN 43772, tantalum cover with tantalum flange disc, carrier protection tube: stainless steel

Protection tube	Material	Protection tube Ø	Suitable for measuring insert Ø	Connection to head
Straight, in line with form 3F DIN 43772, non-standard design E1	Tantalum / stainless steel	11 x 2 mm, tantalum cover 12 x 0.4 mm	6 mm	M24 x 1.5 (rotatable threaded connection, male nut)
		15 x 3 mm, tantalum cover 16 x 0.4 mm	6 mm with sleeve Ø 8 mm / 8 mm	
Tapered, in line with form 3F DIN 43772, non-standard design E1	Tantalum / stainless steel	12 x 2.5 mm, tantalum cover 13 x 0.4 mm	6 mm	M24 x 1.5 (rotatable threaded connection, male nut)

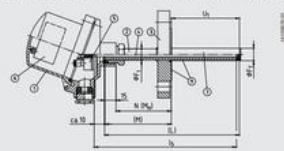
Version: Flanged protection tube from standard material



Version: Flange from standard material, protection tube and flange disc from special materials



Version: Flanged protection tube from standard material with tantalum cover



- Legend:
- 1) Connection head
 - 2) Neck tube
 - 3) Flange
 - 4) Measuring insert (TC10-A)
 - 5) Optional (brick transmitter (optional))
 - 6) Transmitter (optional)
 - 6) Protection tube
 - 7) Flange disc from special material
 - 8) Tantalum cover
- E1 Overall length of protection tube
 L1 Measuring insert length
 L2 Protection tube insertion length
 L3 Protection tube length
 Ø P Protection tube diameter
 Ø M Outer diameter of tantalum cover
 N Neck length
 Ø N Neck tube length